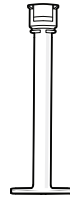


Sympfina[®]

INSTRUCTIONS FOR USE

SYRINGE COMPONENTS



Barrel



Plunger



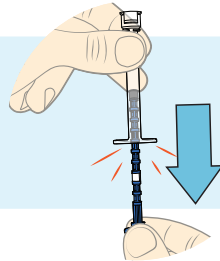
Dosing Clip
used to set the
dose amount
on the plunger



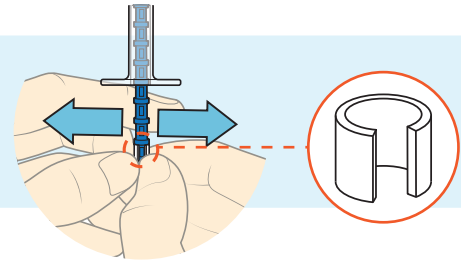
Multiparticulate

SETTING THE DOSE

- 1 FORCEFULLY pull the plunger from the barrel to reveal the dosing clip.

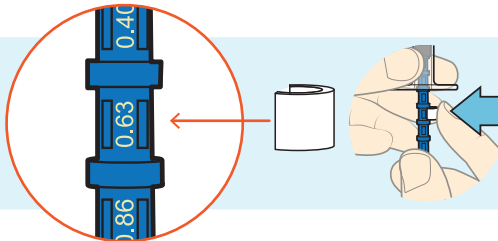


- 2 Remove the dosing clip from the plunger.

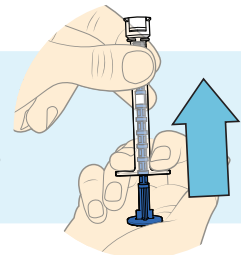


TIP You will encounter resistance, pull past this.

- 3 Push clip onto the dose setting identified by the plunger dosing number.



- 4 Forcefully re-insert the plunger into the barrel. The syringe is now ready for use.



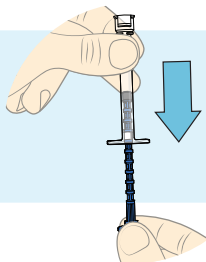
TIP Identify dose amount by the number on the plunger.

BACK

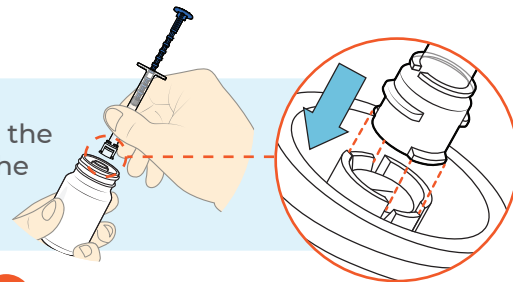


FILLING & DELIVERING

- 5 Set the dosing amount by pulling the plunger back until it stops.

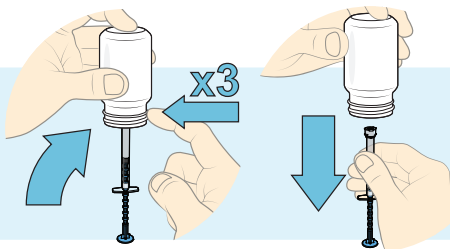


- 6 Remove the bottle's cap and insert the syringe by aligning the tabs on the syringe tip with the tab acceptance slots on the bottle.

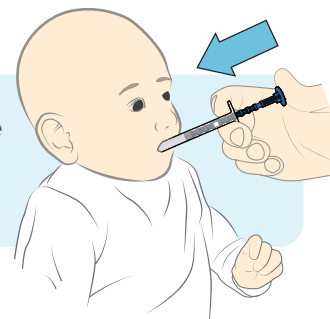


TIP Hold the barrel when inserting.

- 7 Flip the bottle vertical and tap the bottleneck 3 times to fill the syringe with drug. Remove the syringe in a vertical position.



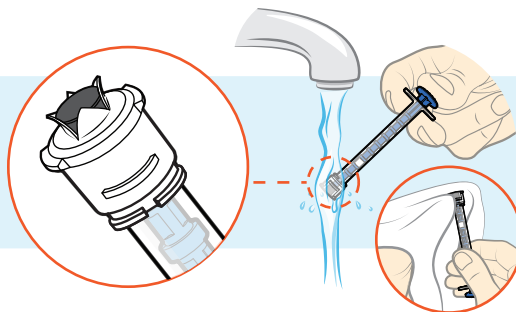
- 8 Fully depress the plunger inside the child's mouth to deliver the drug.



TIP Hold the barrel when removing the syringe.

CLEANING

- 9 Rinse and dry the syringe tip with the plunger fully depressed.



- 10 Remove the plunger from the barrel and allow to air dry for 1 hour before next use.

